



**FOR LEASE | 2,990 SF OFFICE/WAREHOUSE**

**BAY 4**

**3700 - 78 AVENUE SE**

**CALGARY, AB**



**CUSHMAN &  
WAKEFIELD**

# 3700 - 78 AVENUE SE

## CALGARY, AB

### Property Details

**District:** Foothills  
**Zoning:** I-G (Industrial General)  
**Parking:** Ample - at no cost

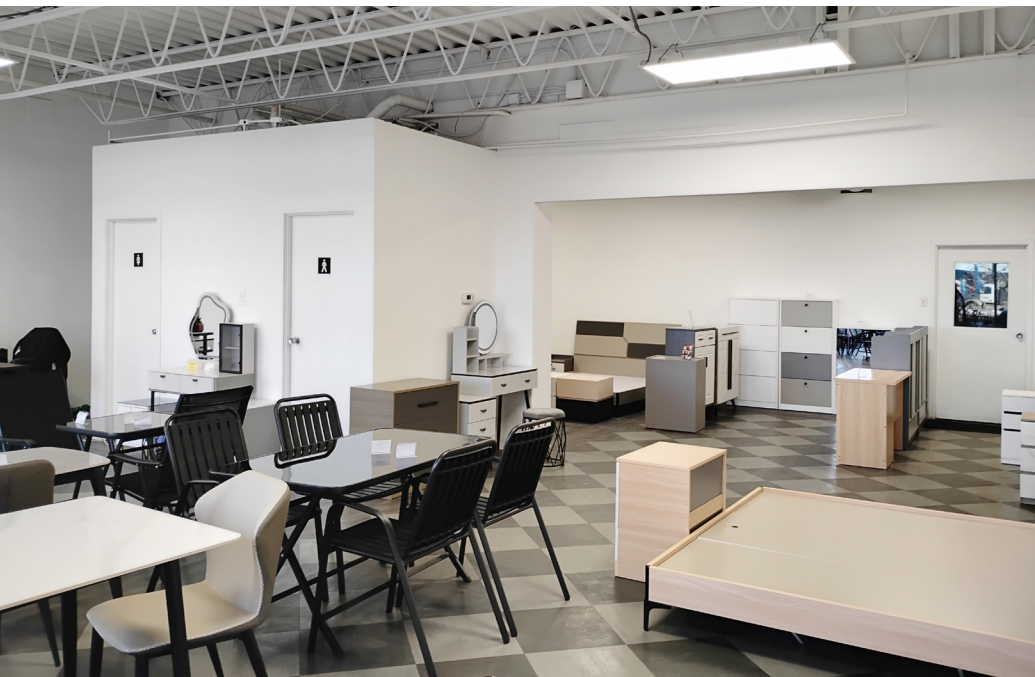
### Comments

- Exhaust venting in warehouse
- Ample free parking
- Sink in warehouse
- Excellent access to Barlow, Glenmore and Deerfoot Trails
- Close proximity to retail amenities

### Lease Particulars

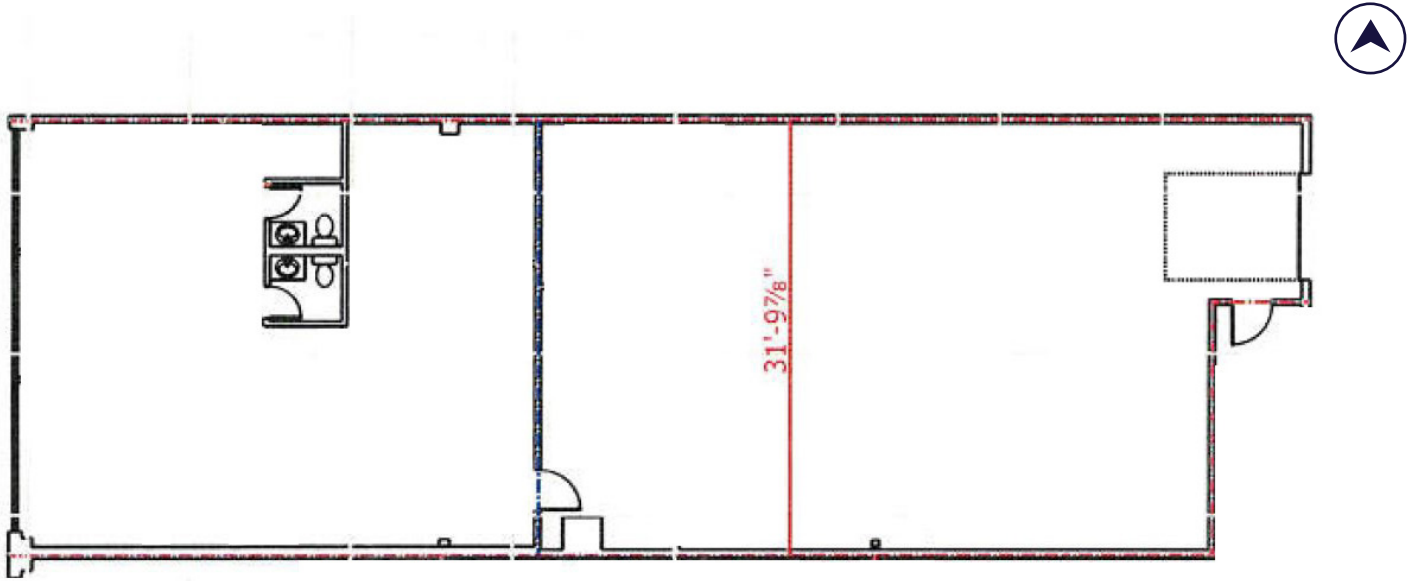
#### Main Floor - Bay 4

**Available Area:** ± 2,990 sf  
**Office Area:** ± 1,274 sf  
**Warehouse Area:** ± 1,716 sf  
**Loading:** 1 (9' x 10') dock door  
**Power:** 225A, 240V (TBV)  
**Asking Rate:** \$12.00 psf  
**Op. Costs:** \$7.60 psf (2025 est.)  
**Available** Immediately



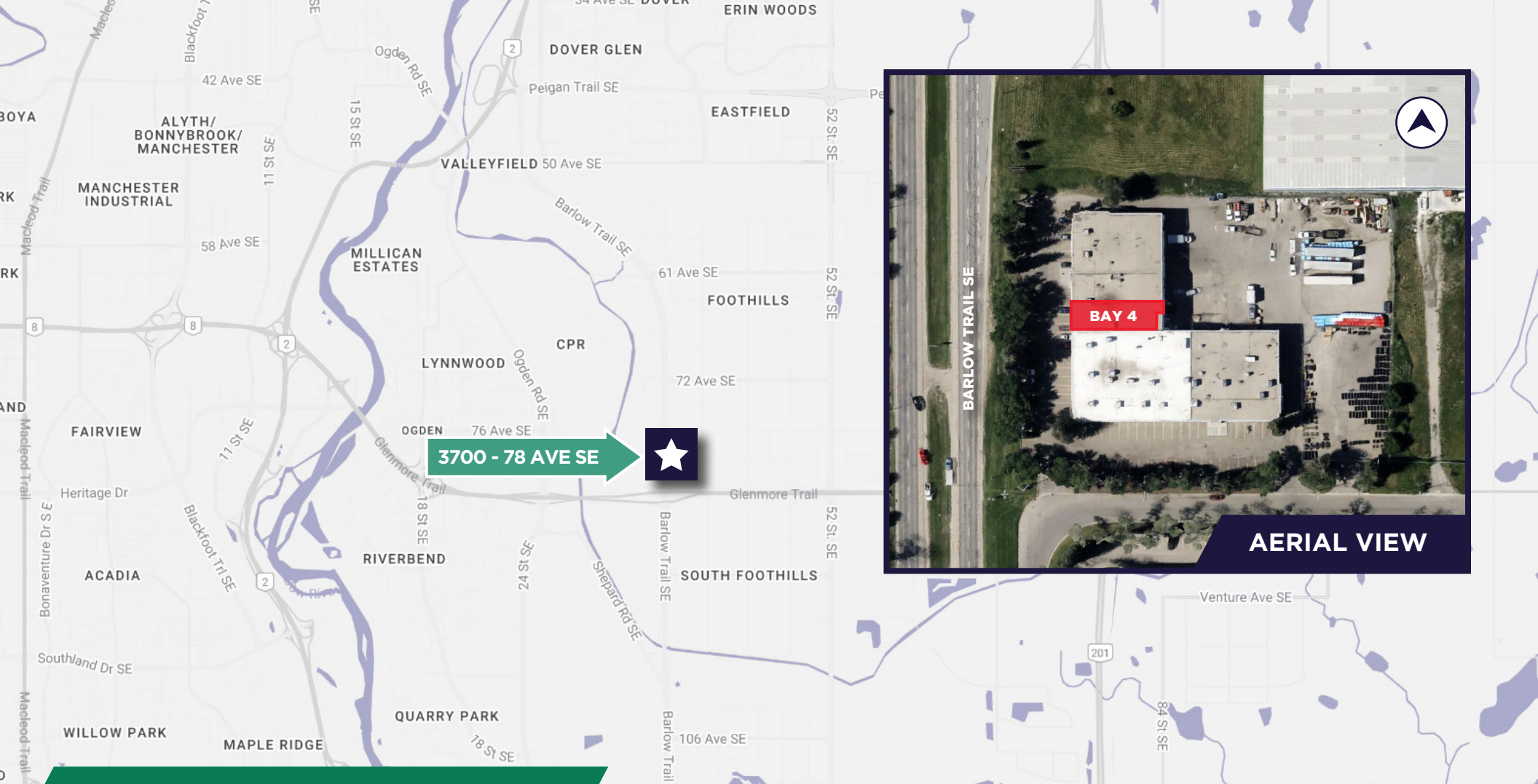
# 3700 - 78 AVENUE SE CALGARY, AB

Floor Plan - Bay 4



\*Not to scale, not exactly as shown.





**FOR MORE INFORMATION, CONTACT**

**SEAN FERGUSON**  
Associate Vice President  
Industrial Sales & Leasing  
+1 403 261 1114  
sean.ferguson@cushwake.com

**ALAN FARLEY**  
Associate Vice President  
Industrial Sales & Leasing  
+1 403 261 1144  
alan.farley@cushwake.com

**Cushman & Wakefield ULC**  
Bow Valley Square IV  
250 - 6th Ave SW, Suite 2400  
Calgary, AB T2P 3H7  
cushmanwakefield.com

©2024 Cushman & Wakefield. All rights reserved. The information contained in this communication is strictly confidential. This information has been obtained from sources believed to be reliable but has not been verified. NO WARRANTY OR REPRESENTATION, EXPRESS OR IMPLIED, IS MADE AS TO THE CONDITION OF THE PROPERTY (OR PROPERTIES) REFERENCED HEREIN OR AS TO THE ACCURACY OR COMPLETENESS OF THE INFORMATION CONTAINED HEREIN, AND SAME IS SUBMITTED SUBJECT TO ERRORS, OMISSIONS, CHANGE OF PRICE, RENTAL OR OTHER CONDITIONS, WITHDRAWAL WITHOUT NOTICE, AND TO ANY SPECIAL LISTING CONDITIONS IMPOSED BY THE PROPERTY OWNER(S). ANY PROJECTIONS, OPINIONS OR ESTIMATES ARE SUBJECT TO UNCERTAINTY AND DO NOT SIGNIFY CURRENT OR FUTURE PROPERTY PERFORMANCE.

